

AppForAI - Windows

AppForAI-Windows is AI Dev Tools for everyone. Packaging state-of-the-art AI algorithms into Windows GUI Applications. More than 20 featured APPs are provided. For software engineers, one-click installation of Python development environment is provided. And more than 200 featured SDK examples are also provided.

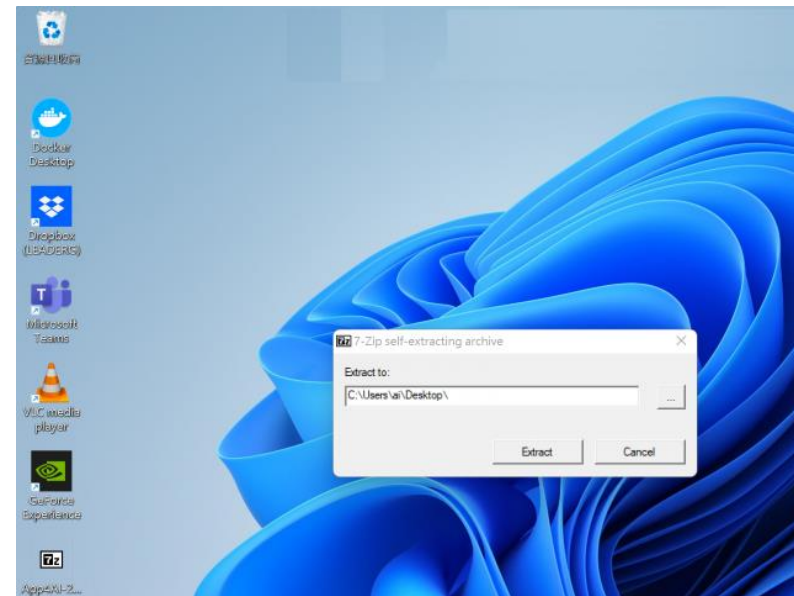
Version 20231106

Applications

- It can be applied to product defect detection, medical image analysis, artificial intelligence teaching materials, crime detection and prevention, access control and attendance, smart long-term care, public security, big data analysis, stock price inference, financial index inference, research and development, etc.

Download

- Download URL: <https://www.leaderg.com/appforai-windows> After downloading, please execute the exe file to decompress it. Please note that the path of the decompression folder must be in English characters or numbers.

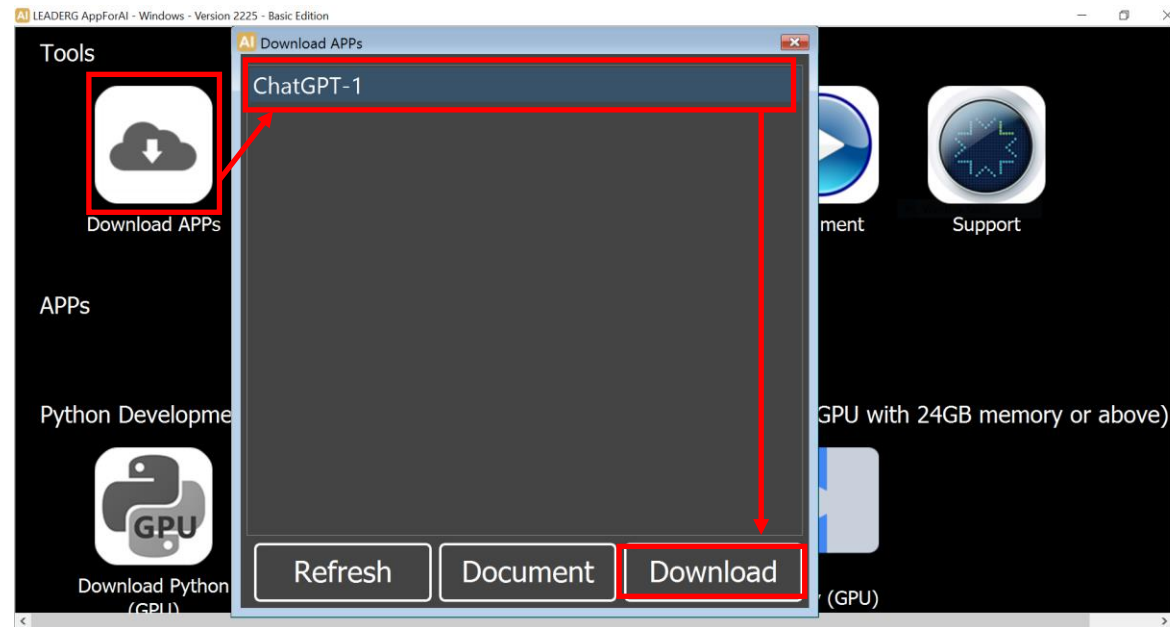


How to Use

- The path of AppForAI folder must be pure English characters or numbers.
- The path of user home folder (C:\Users\xxx) must be pure English characters or numbers.
- If you pause antivirus software or make AppForAI folder in white list, the speed will be increased for more than 20%.
- If not installed yet, please install third_party_tools\windows\vc_redist_x64-vc2010.exe
- If not installed yet, please install third_party_tools\windows\vc_redist_x64-vc2015-vc2022.exe
- If not installed yet, please install latest Nvidia GPU driver from <https://www.nvidia.com/Download/index.aspx>
- Please set OS default browser to be Chrome or Firefox.
- Please execute AppForAI.exe to start user interface.
- Basic features are free. Please sponsor a subscription to AppForAI for advanced features.
- If not subscribed yet, please execute subscribe.bat to subscribe LEADERG AppForAI.
- Detail information is inside of readme.txt in sdk folders.
- Basic features are free. Please sponsor a subscription to AppForAI for advanced features.
- If not subscribed yet, please execute subscribe.bat to enter subscription code.

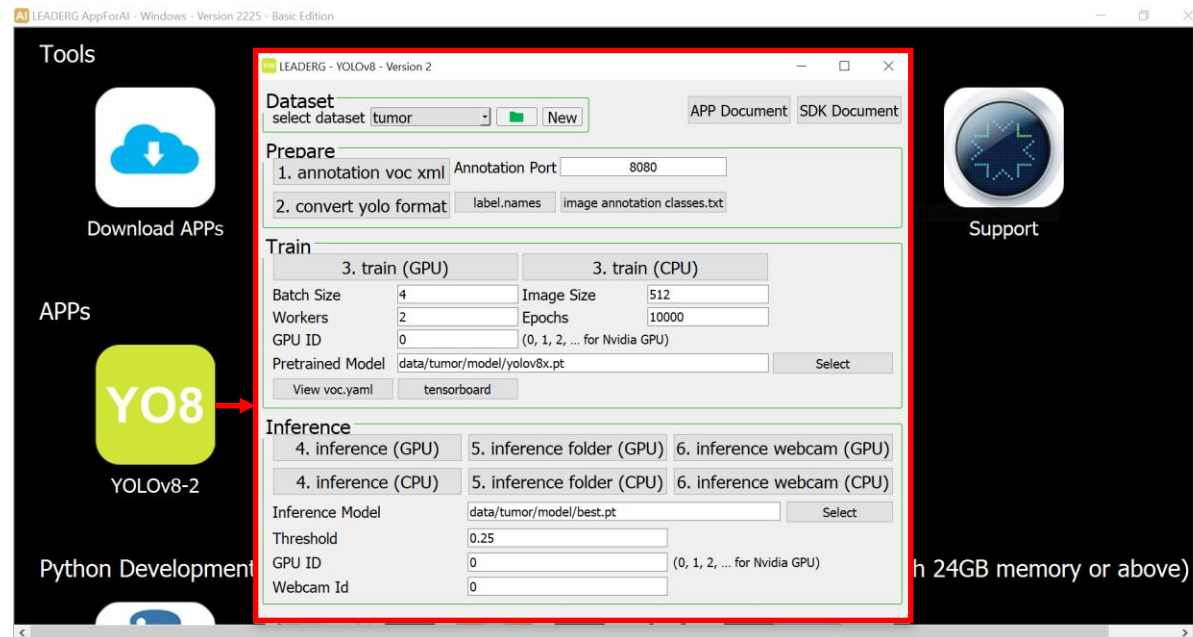
Instruction Step 1

- Please click "Download APPs" icon. Wait for a while. Then select the APP you are interested in and click the "Download" button.



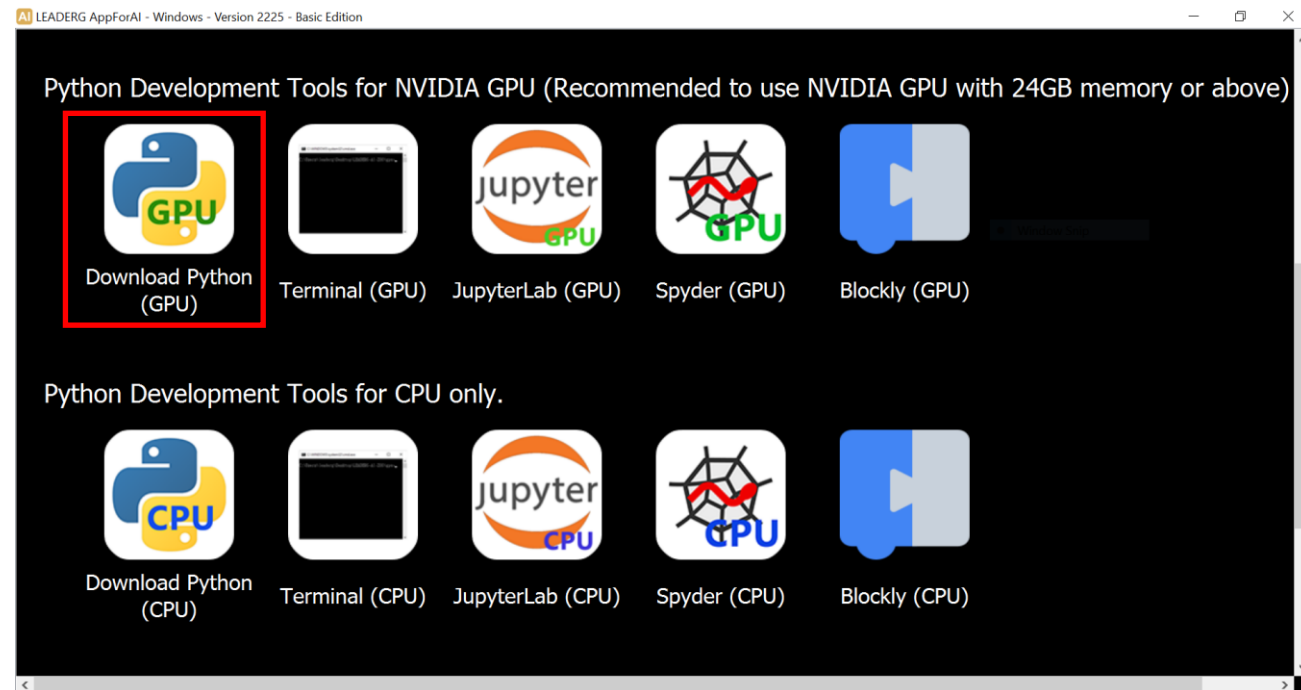
Instruction Step 2

- After the download is complete, the APP icon will appear on the main screen. Double-click the APP icon to execute the APP.



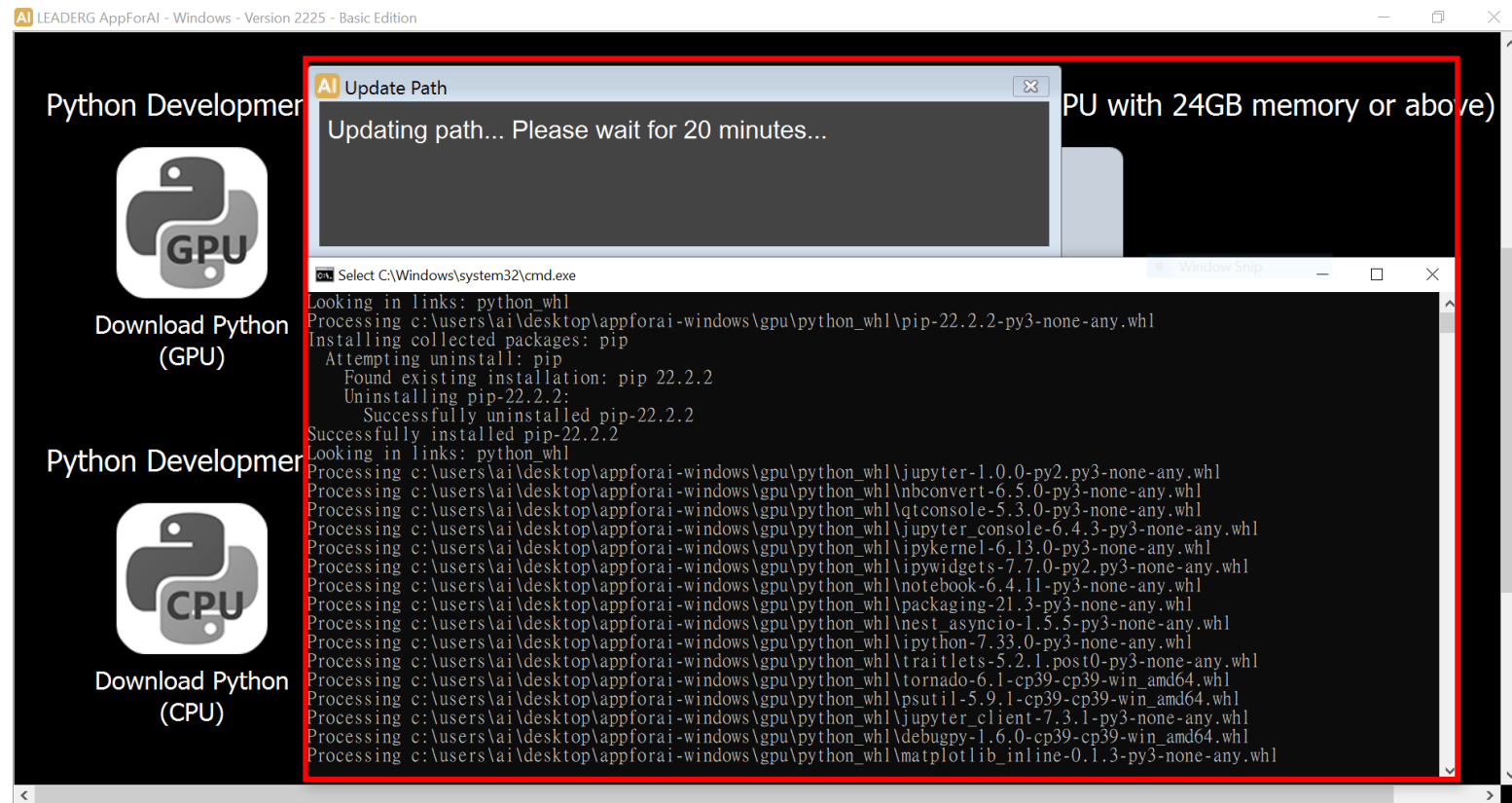
Python Tools - Instruction Step 1

- If you have NVIDIA GPU, please execute Download Python (GPU).
- If you don't have NVIDIA GPU, please execute Download Python (CPU).



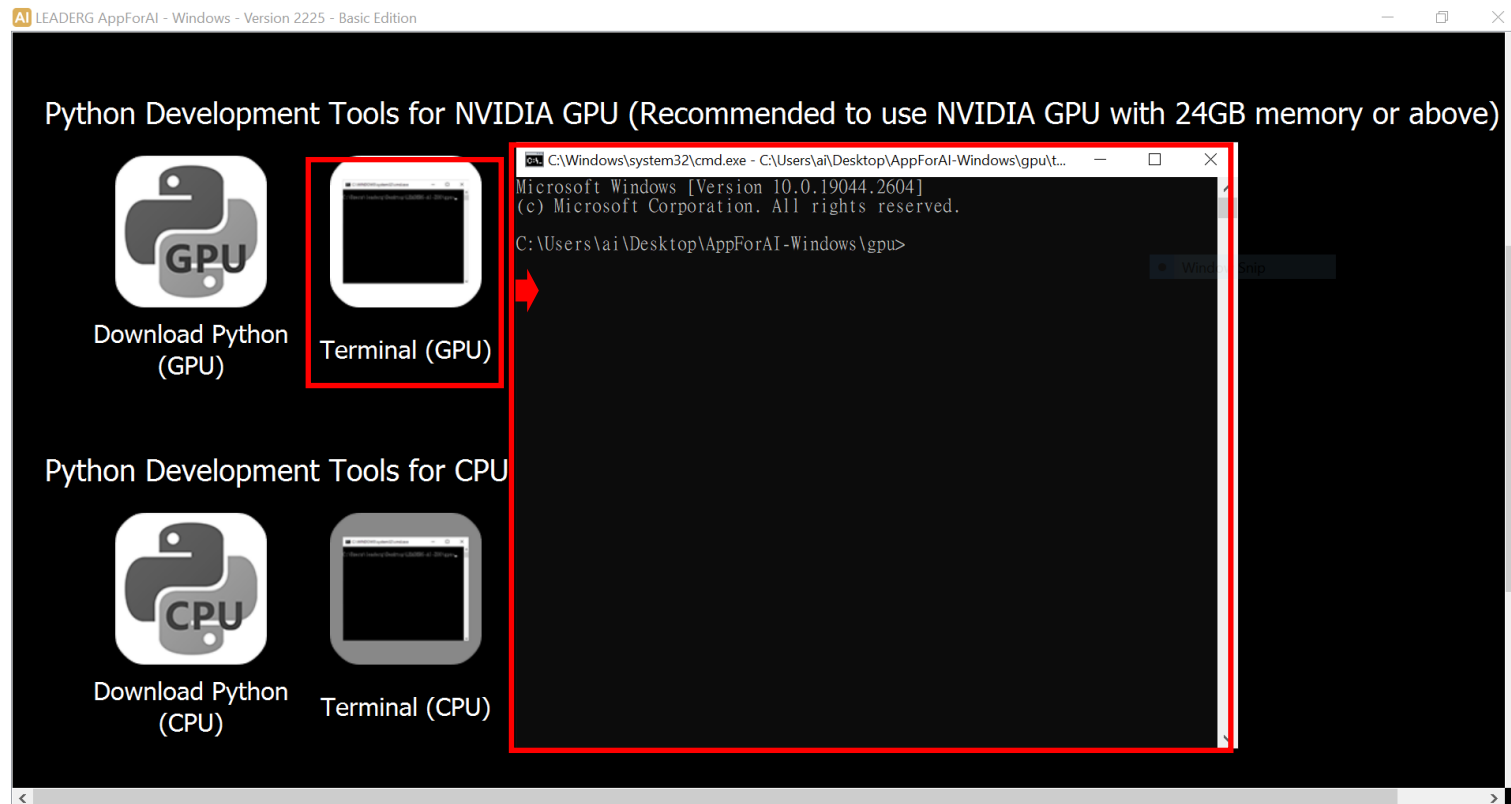
Python Tools - Instruction Step 2

- After the download is complete, please wait for updating path. It will take around 20 minutes.



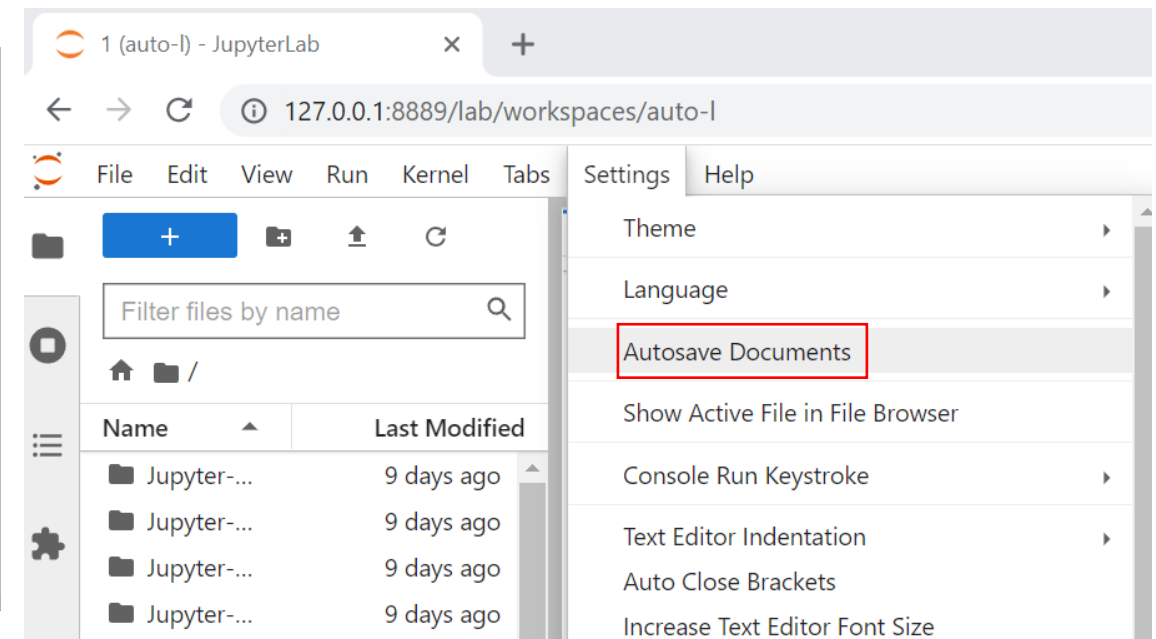
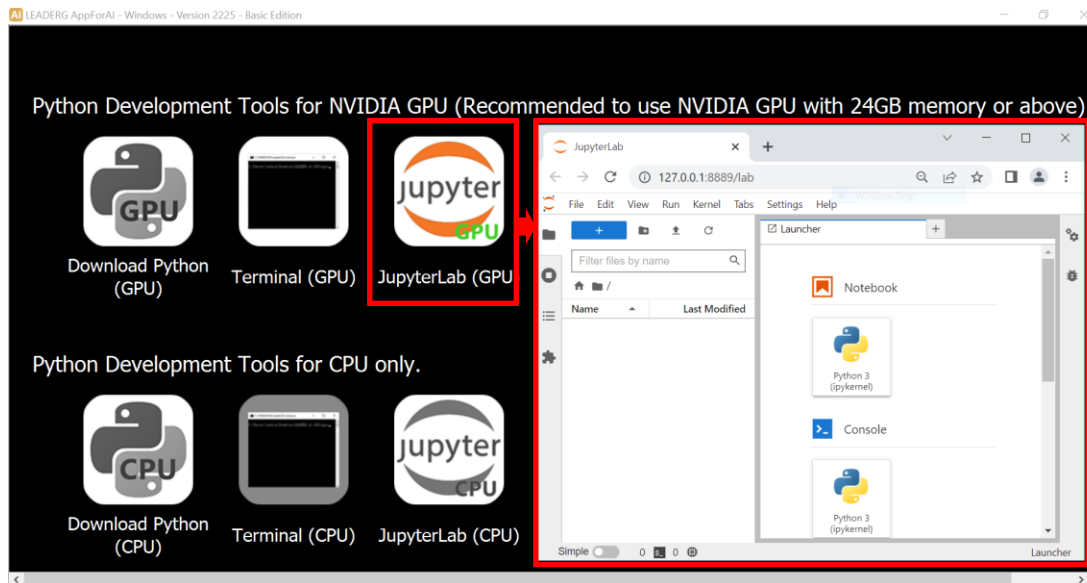
Python Tools - Instruction Step 3

- If you want to install additional Python packages, please execute the "Terminal".



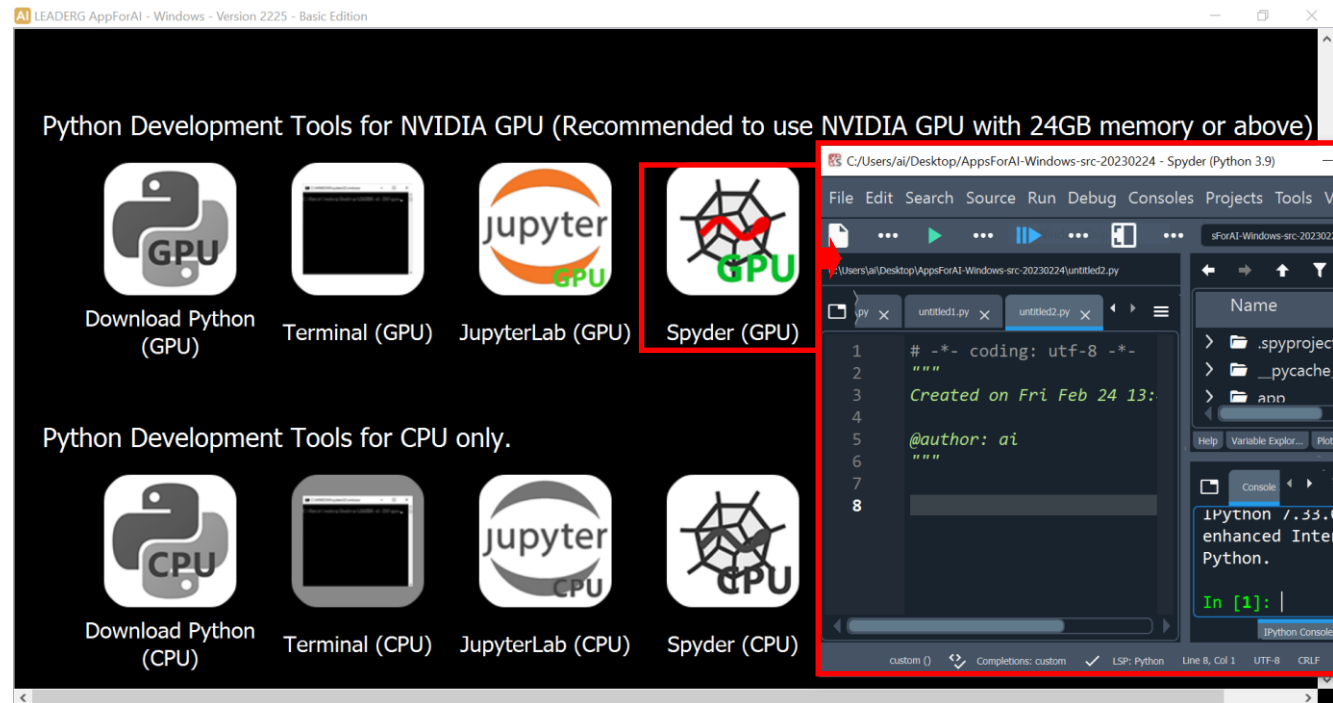
Python Tools - Instruction Step 4

- Double click JupyterLab icon to enter the JupyterLab development environment, which is suitable for algorithm development. It is recommended to disable JupyterLab -> Tools -> Auto Save Document function.



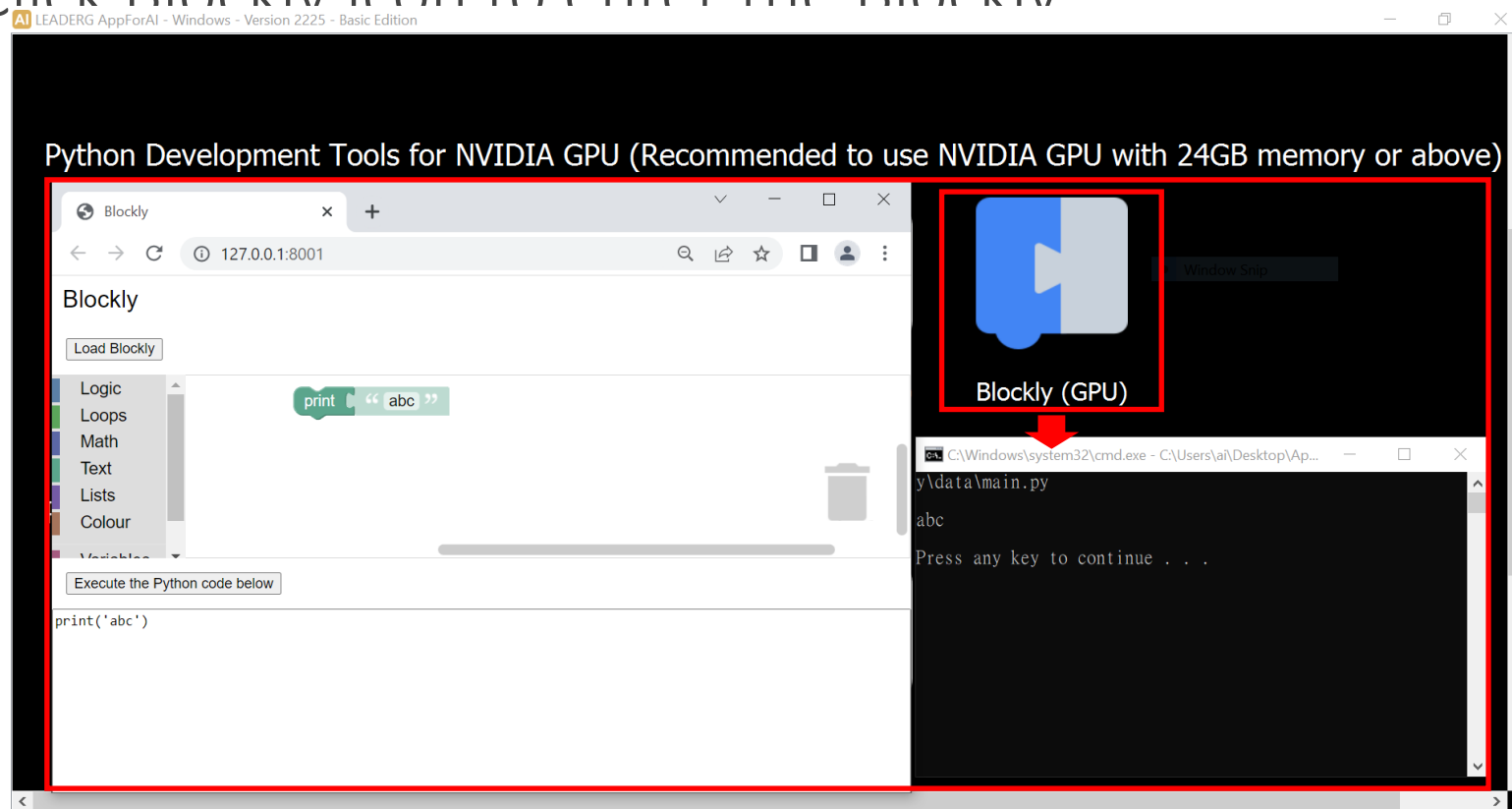
Python Tools - Instruction Step 5

- Double click Spyder icon to enter the Spyder development environment, which is suitable for GUI application development.



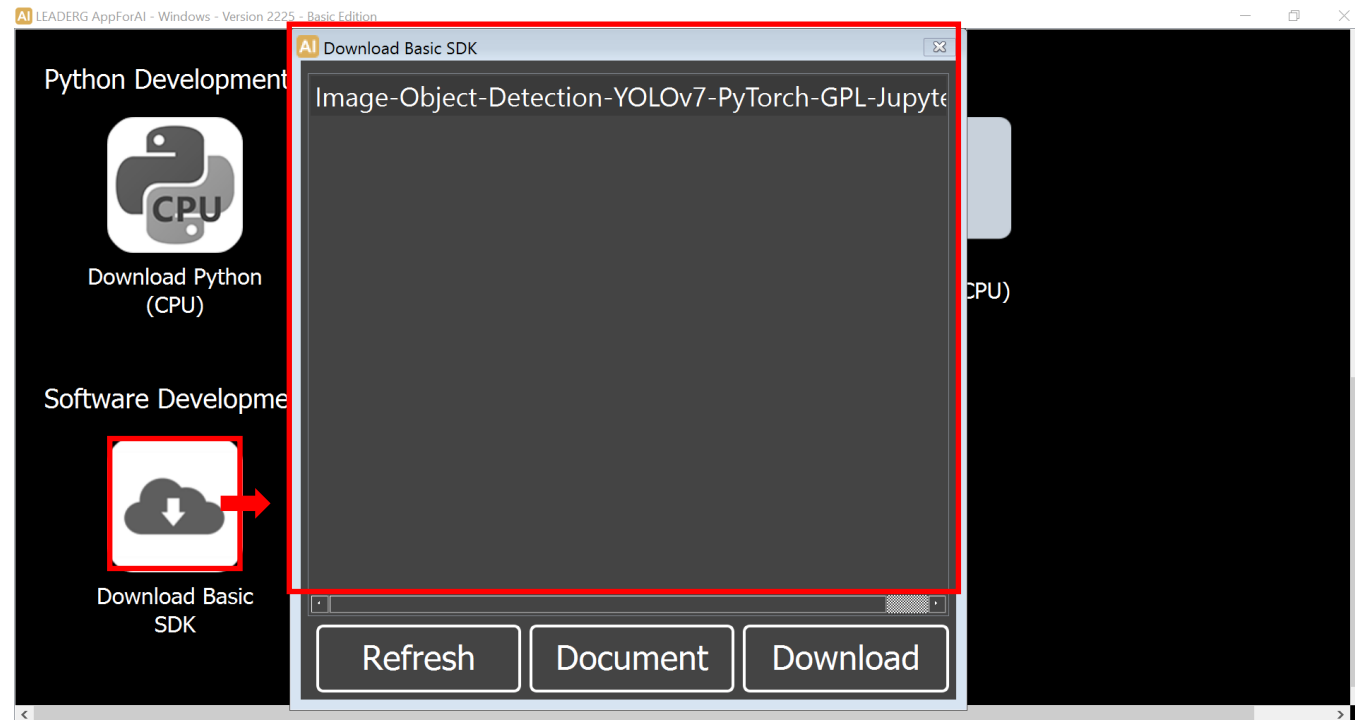
Python Tools - Instruction Step 6

- Double click Blockly icon to enter the Blockly



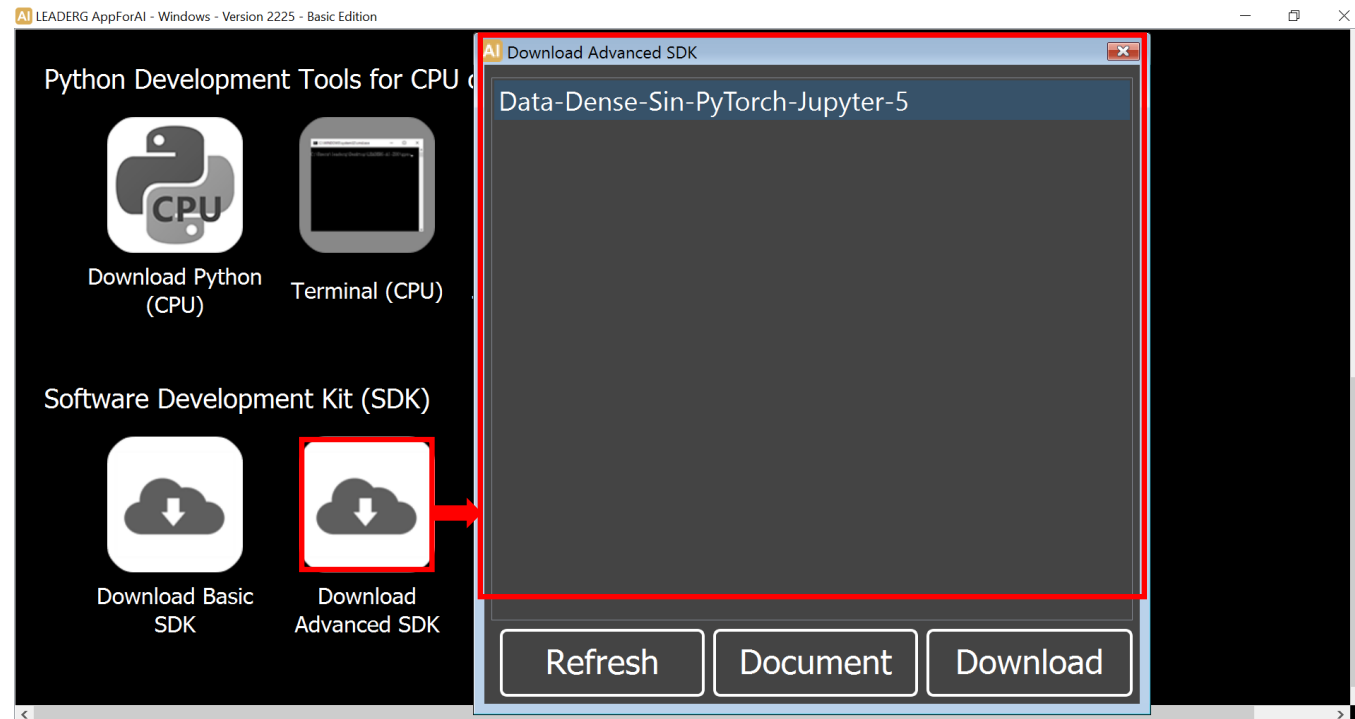
SDK – Instruction Step 1

- Double click "Download Basic SDK icon". After SDK list is loaded from internet, please select the SDK you are interested in and then click the "Download" button.



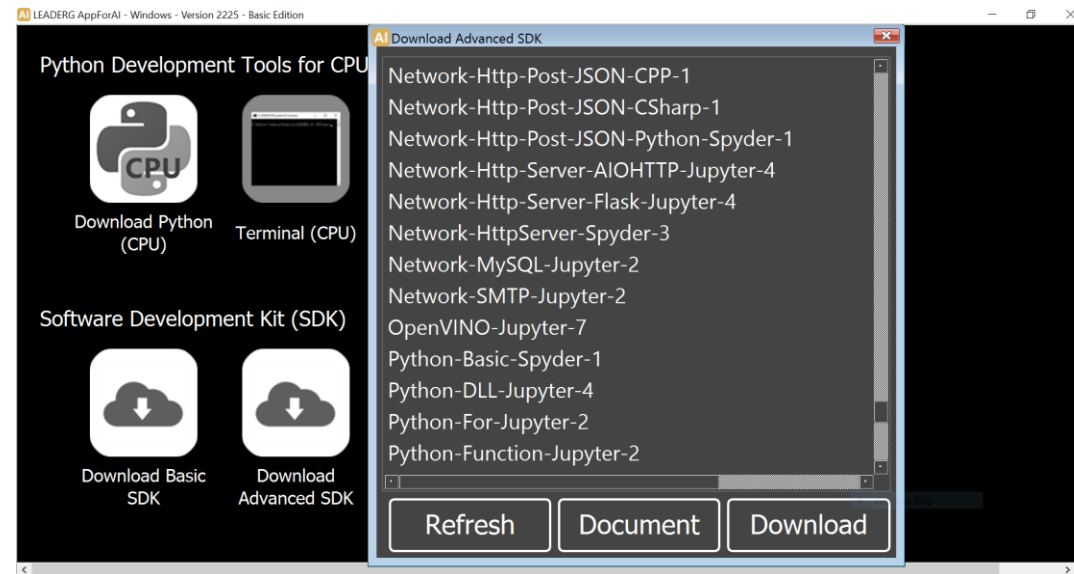
SDK – Instruction Step 1

- Double click "Download Advanced SDK icon". After SDK list is loaded from internet, please select the SDK you are interested in and then click the "Download" button.



SDK - Instruction Step 2

- SDK name with the prefix -Jupyter: Please use JupyterLab to run it.
- SDK name with the prefix -Spyder : Please use Spyder to run it.
- SDK name with the prefix -VS : Please use Microsoft Visual Studio to run it.



Reference

- LEADERG AppForAI : <https://www.leaderg.com/appforai-windows>
- Copyright © LEADERG INC. All rights reserved.