

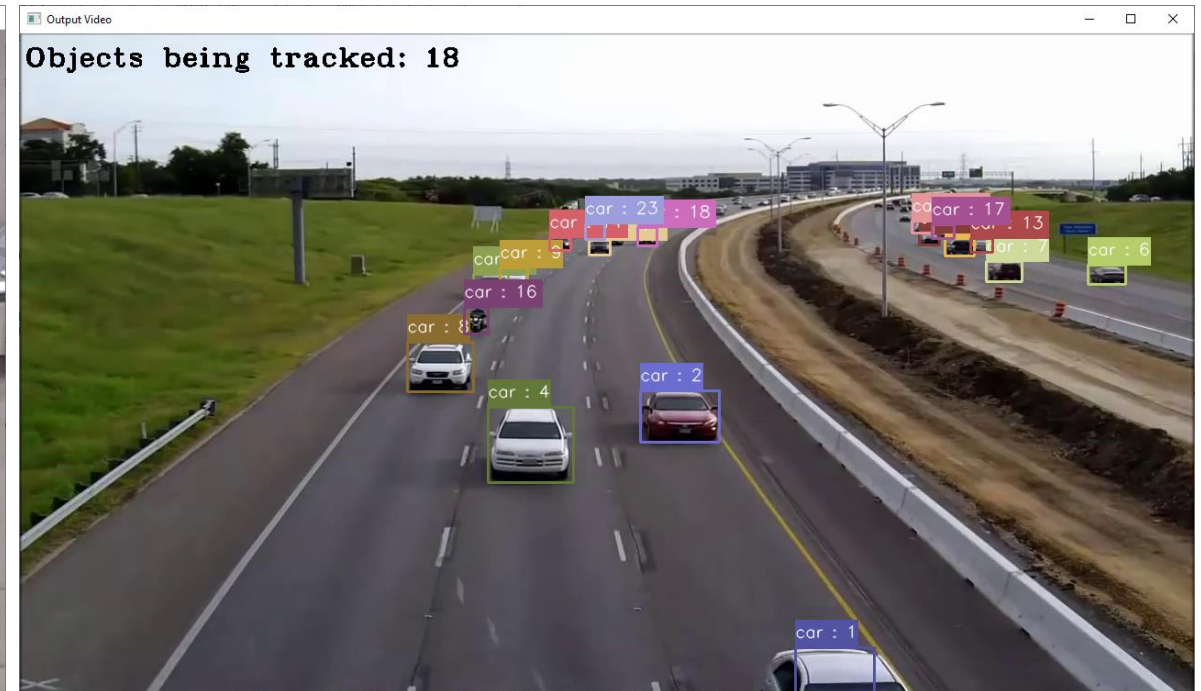
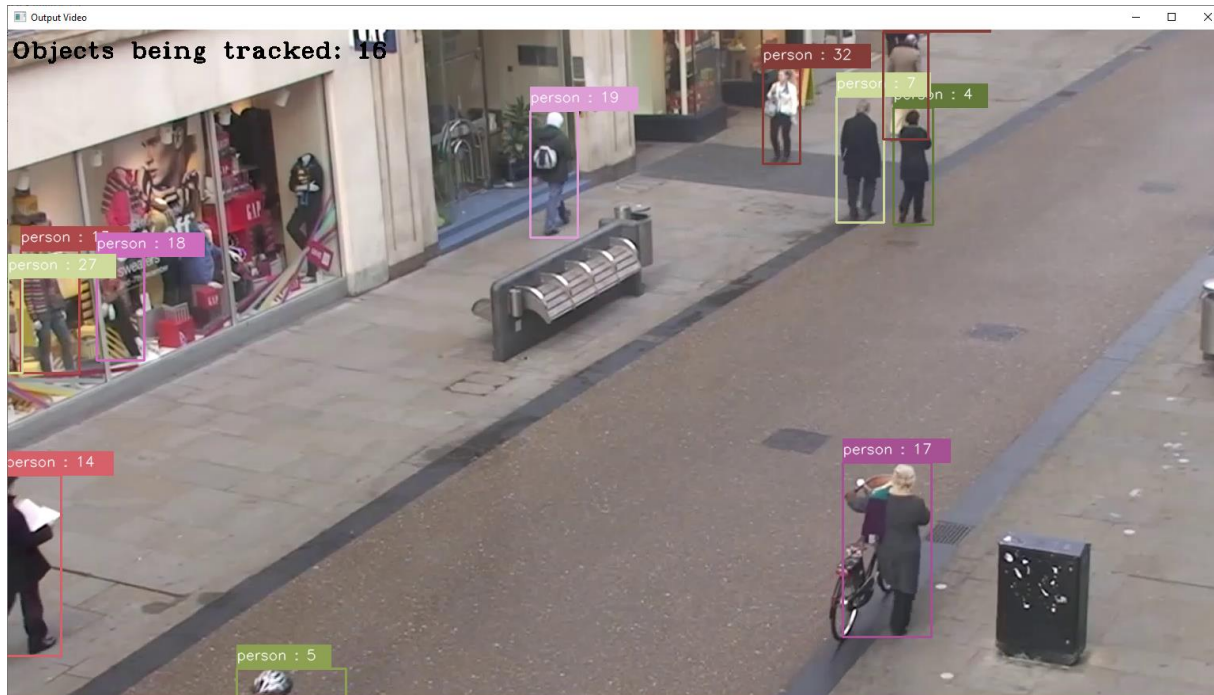
Image-Object-Detection- YOLOv7-Deepsort-Tracking-GPL- Jupyter

Use YOLOv7+Deepsort for real-time multi-object tracking, which can be applied to various fields such as monitoring systems and traffic flow analysis.

Version 20230130

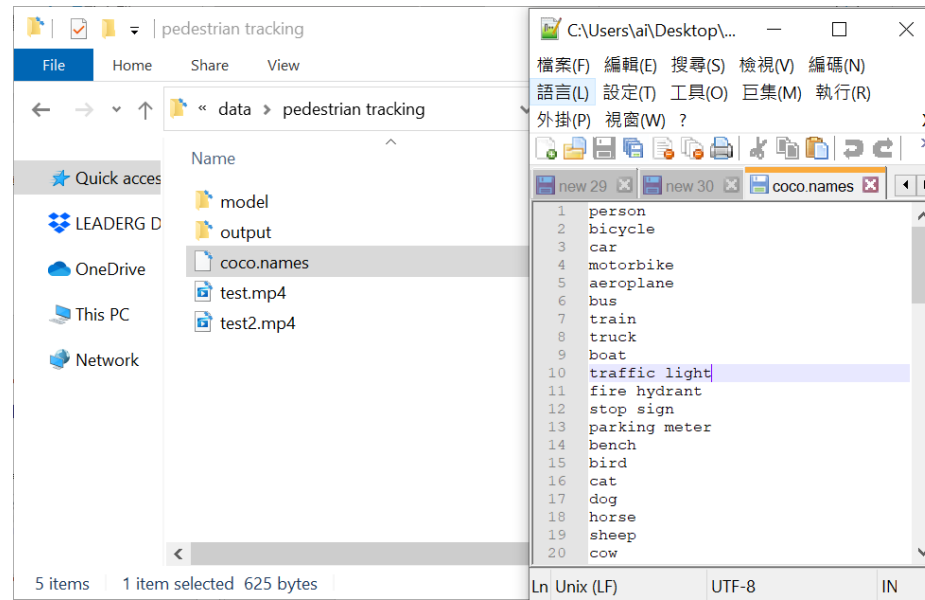
Applications

- It can be applied to various fields such as monitoring systems and traffic flow analysis.



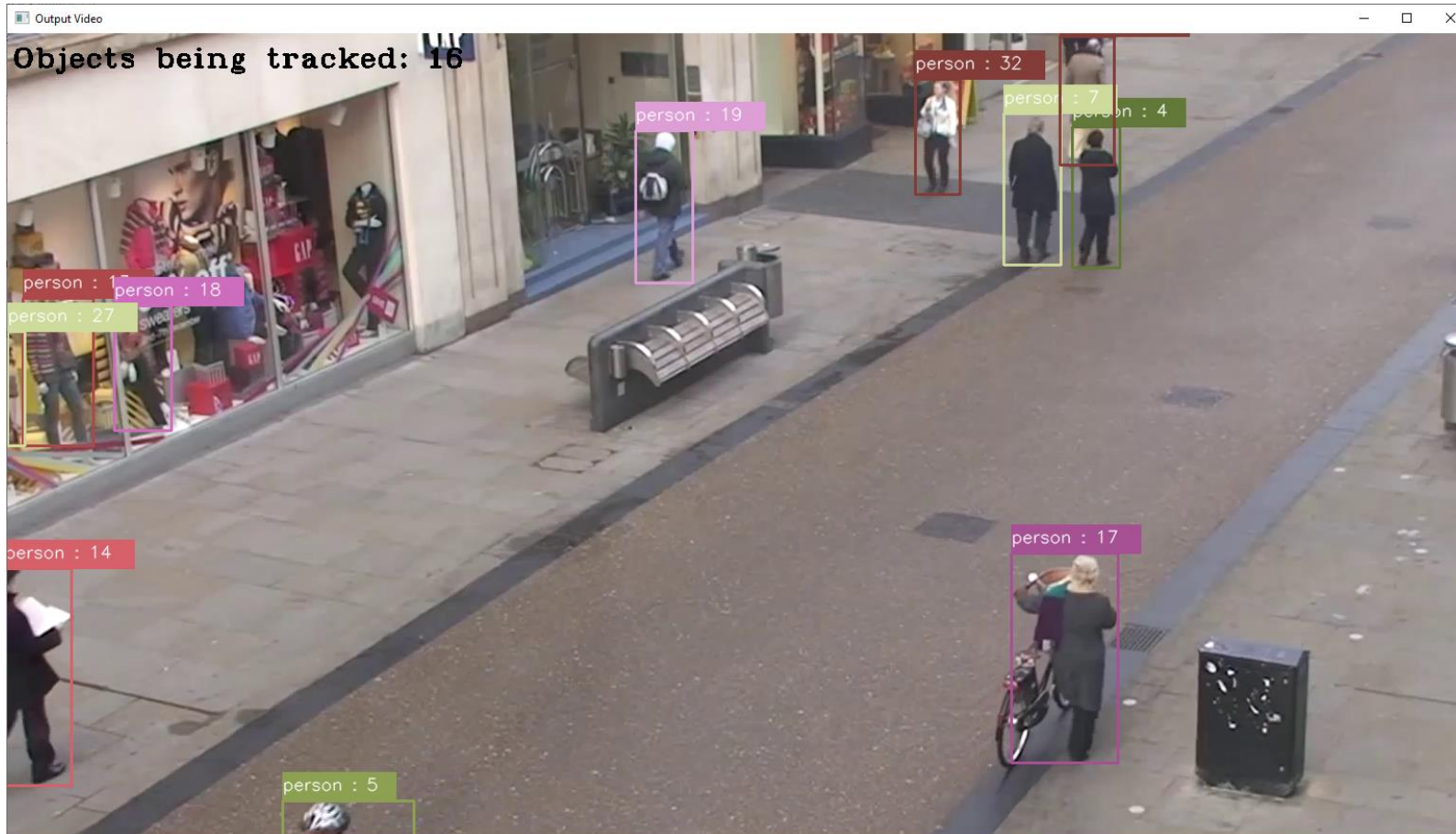
Pedestrian_tracking_demo.ipynb

- Parameter setting
 - input_video : input video path.
 - output_video : output video path.
 - class_id : select the category id to track from coco.names. For example, class_id = "0,17", the tracking target is person, horse.



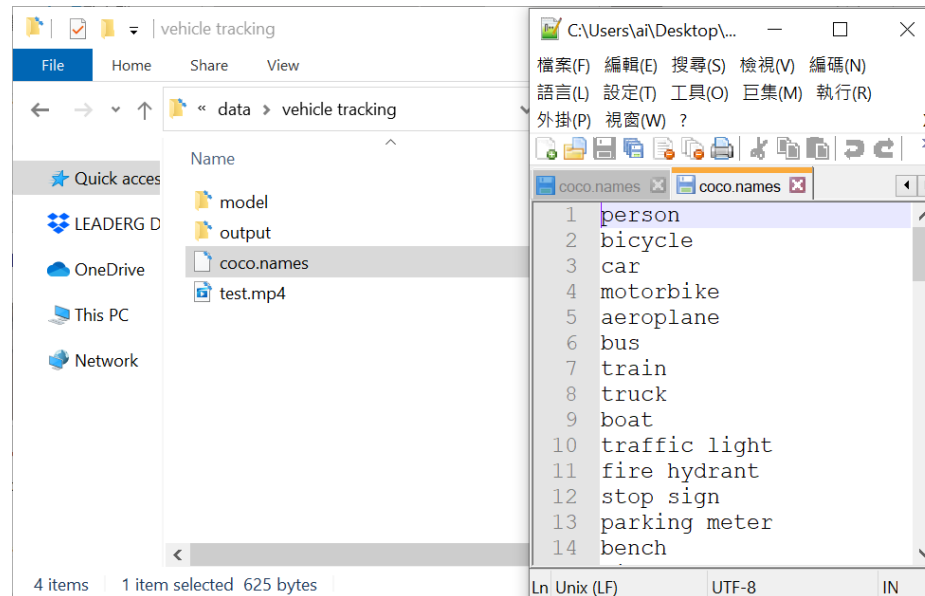
Pedestrian_tracking_demo.ipynb

- Result.



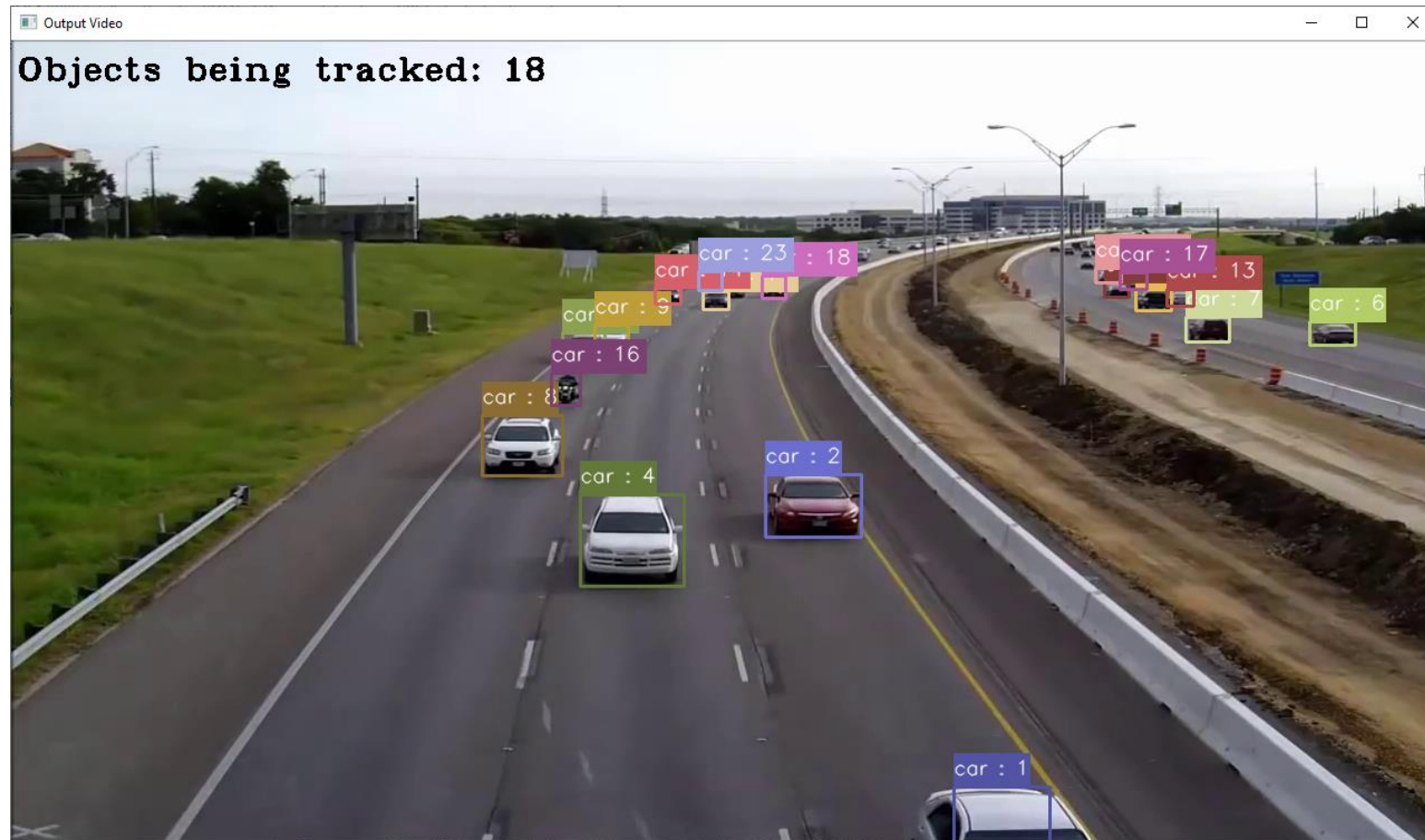
Vehicle_tracking_demo.ipynb

- Parameter setting
 - input_video : input video path.
 - output_video : output video path.
 - class_id : select the category id to track from coco.names. For example, class_id = "1,2,3,5", the tracking target is bicycle, car, motorbike, bus.



Vehicle_tracking_demo.ipynb

- Result.



Reference

- Please refer to the readme.txt in the SDK folder.
- LEADERG AppsForAI : <https://www.leaderg.com/appsforai-windows>
- Copyright © LEADERG INC. All rights reserved.