

# ImageAugmentation

Augment image files in batches.

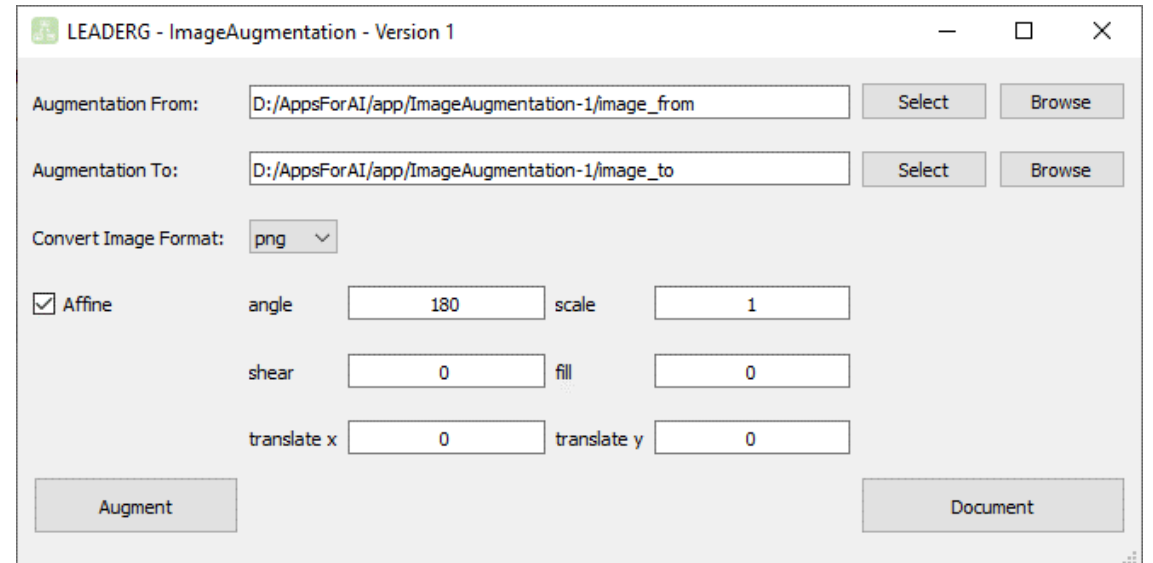
Version 20230223

# Applications

- Augment images with PyTorch Affine function like rotation, translation.

# How to use

1. Copy image to image\_from folder
2. Confirm output folder path and content
3. Set parameter
4. Press Augment button to augment image



# Parameter introduction

angle: Between -180 ~ 180 degrees, rotate clockwise.

scale: Zoom factor, 1 means original 100%, 0.75 means 75%.

shear: Between -180 ~ 180 degrees, shear angle value.

fill: Between 0 ~ 255 .Pixel fill value for the area outside the transformed image.

translate x: Translate the x-coordinate starting point position.

translate y: Translate the y-coordinate starting point position.

angle	<input type="text" value="180"/>	scale	<input type="text" value="1"/>
shear	<input type="text" value="0"/>	fill	<input type="text" value="0"/>
translate x	<input type="text" value="0"/>	translate y	<input type="text" value="0"/>

### Original image



### Rotation

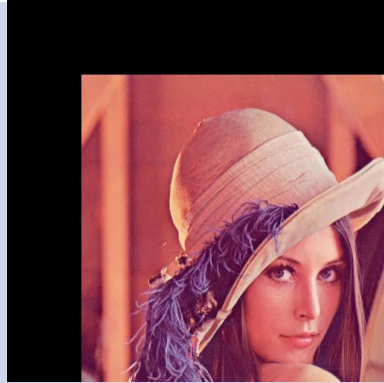


angle  scale

shear  fill

translate x  translate y

### Translate

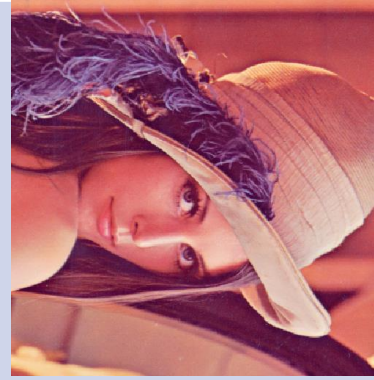


angle  scale

shear  fill

translate x  translate y

### Rotation + Scale

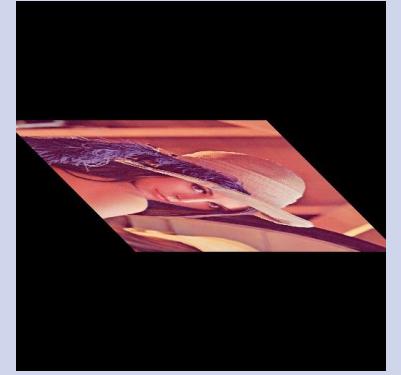


angle  scale

shear  fill

translate x  translate y

### Rotation + Scale + Shear



angle  scale

shear  fill

translate x  translate y

### Scale



angle  scale

shear  fill

translate x  translate y

### Shear

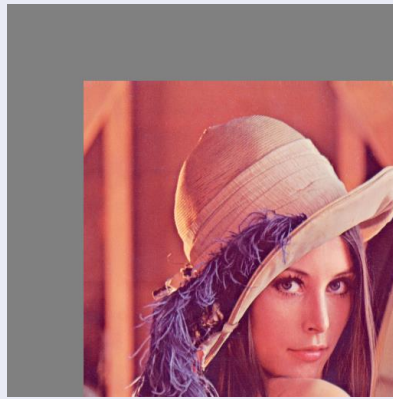


angle  scale

shear  fill

translate x  translate y

### Translate + Fill



angle  scale

shear  fill

translate x  translate y

### Rotation + Translate

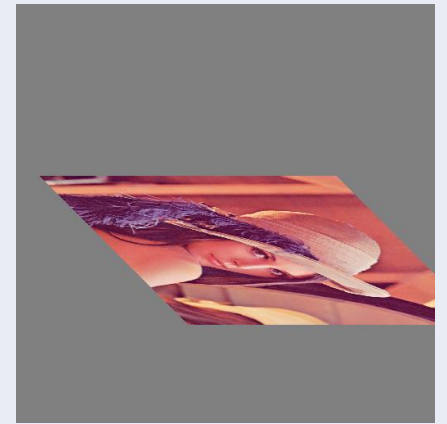


angle  scale

shear  fill

translate x  translate y

### Rotation + Scale + Shear + Fill + Translate



angle  scale

shear  fill

translate x  translate y

# Reference

- Please refer to the readme.txt in the APP folder.
- LEADERG AppForAI: <https://www.leaderg.com/appforai-windows>
- Copyright © LEADERG INC. All rights reserved.