

# StableDiffusion

The most popular AI image generation tool recently.

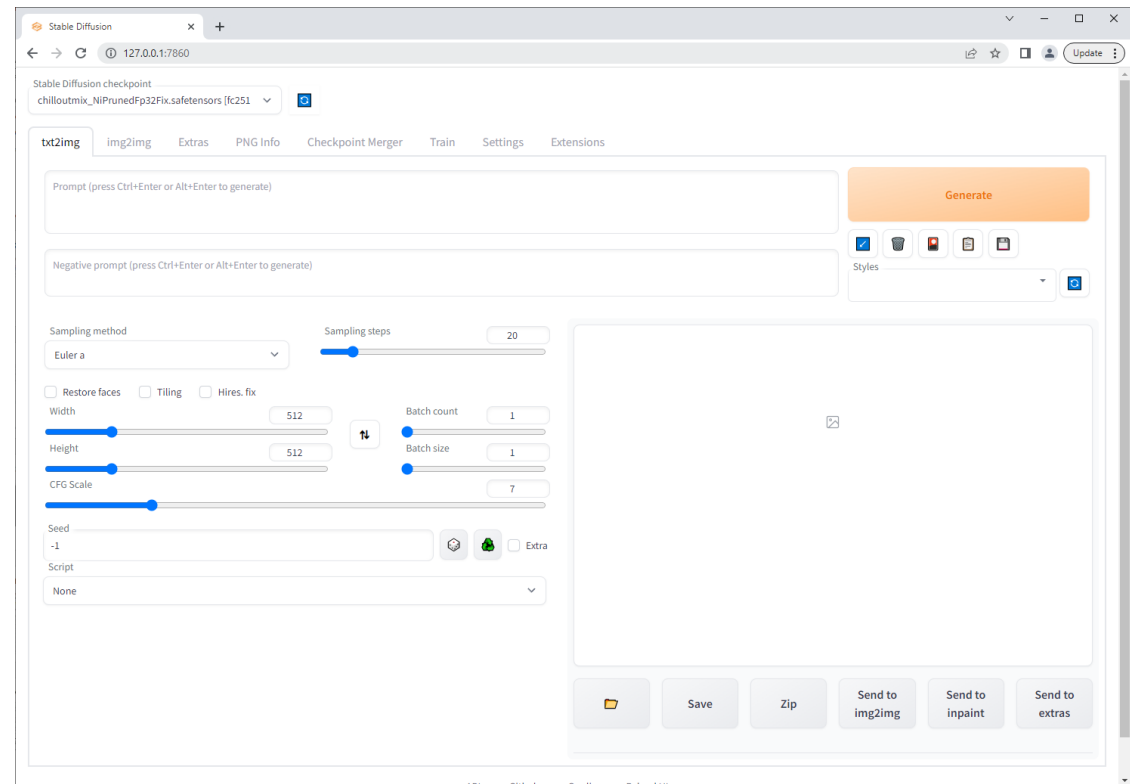
Version 20230621

# Applications

- Using StableDiffusion can be applied to automatically generate images of various specified conditions.

# How to use

Press start server to open the web page for image generation.



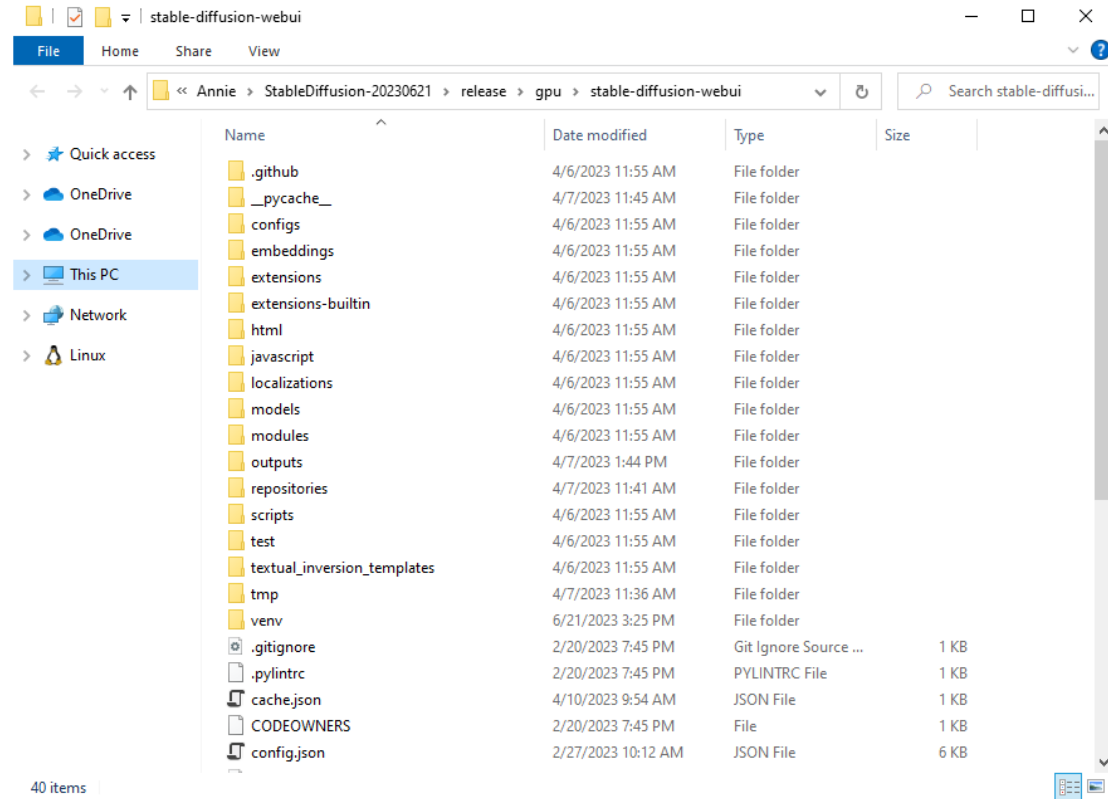
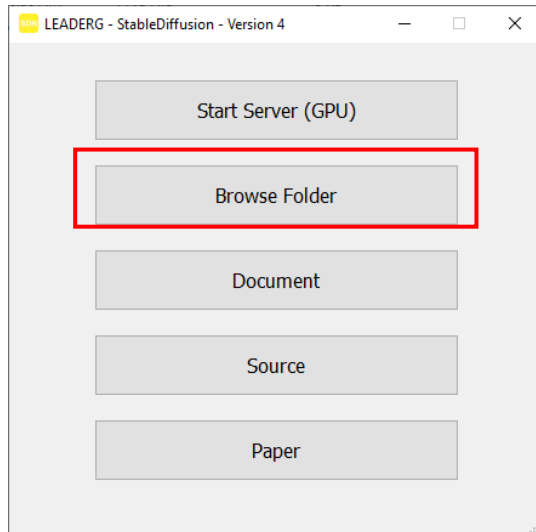
# Start Server (GPU)

- Press start server to open the <http://127.0.0.1:7860> web page for image generation.
- Please refer to <https://stable-diffusion-art.com/automatic1111/> for usage

The image displays two overlapping windows. On the left is a file explorer window titled 'LEADERG - StableDiffusion - Version 5'. It contains several buttons: 'Start Server (GPU)' (highlighted with a red box), 'Browse Folder', 'Document', 'Source', and 'Paper'. On the right is a terminal window showing the command prompt output for starting the server. The output includes instructions to downgrade Python, download requirements, and launch the Web UI. The terminal shows the server is running on the local URL <http://127.0.0.1:7860>. On the right is a browser window showing the Stable Diffusion web interface at the same URL. The interface includes a 'Generate' button, a 'Prompt' field, a 'Negative prompt' field, and various settings like 'Sampling method' (Euler a), 'Sampling steps' (20), 'Width' (512), 'Height' (512), 'Batch count' (1), 'Batch size' (1), and 'CFG Scale' (7). There are also buttons for 'Save', 'Zip', 'Send to img2img', 'Send to inpaint', and 'Send to extras'.

# Browse Folder

Press the Browse Folder button to open folder.

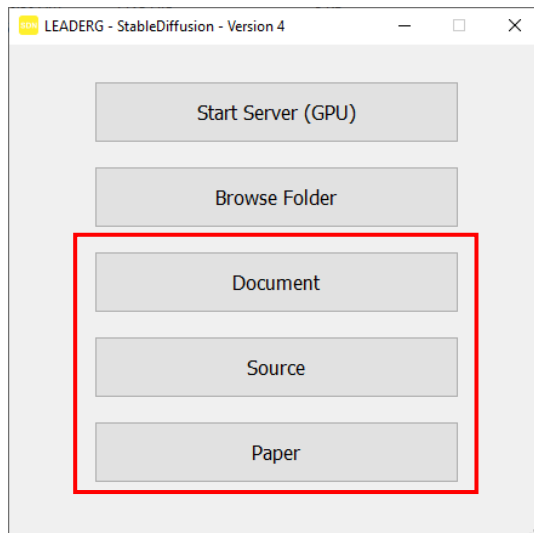


# Document, Source, Paper

Press the Document button to open the web page.

Press the Source button to open the source code web page.

Press the Paper button to open the paper web page.



# Reference

- Please refer to the readme.txt in the APP folder.
- LEADERG AppForAI: <https://www.leaderg.com/appforai-windows>
- Copyright © LEADERG INC. All rights reserved.